



MTN-017 Site Training Guide

Behavioral Assessments at Enrollment



Acceptability Measurement

Behavioral Objective:

To evaluate and compare **acceptability** of daily FTC/TDF tablet, daily TFV RG 1% gel, and RAI-associated TFV RG 1% gel

- To identify associations between number of tablets and applicators used during the 8-week cycles and acceptability, demographic, and background factors



Baseline Behavioral Questionnaire

□ Computer-Assisted Self Interview (CASI):

- Administered upon Enrollment(V2)
- Collects:
 - socio-demographic information,
 - sexual behaviors,
 - use of rectal products,
 - drug and alcohol use,
 - smoking history,
 - risk perception,
 - anticipated likelihood of microbicide use.

Administering CASI Assessments

Assessment is web-based.
Participants' responses are recorded as they fill in the questionnaires and stored on a server at SCHARP.

□ Equipment

- Computer connected to the Internet
- External mouse
- Private space where screen cannot be seen by others

□ Access

- www.scharp.org/MTN017/baseline_thai

□ Troubleshooting

- Check power cord/mouse/Internet
- Email: mtn017webtrouble@mtnstopshiv.org



SMS System

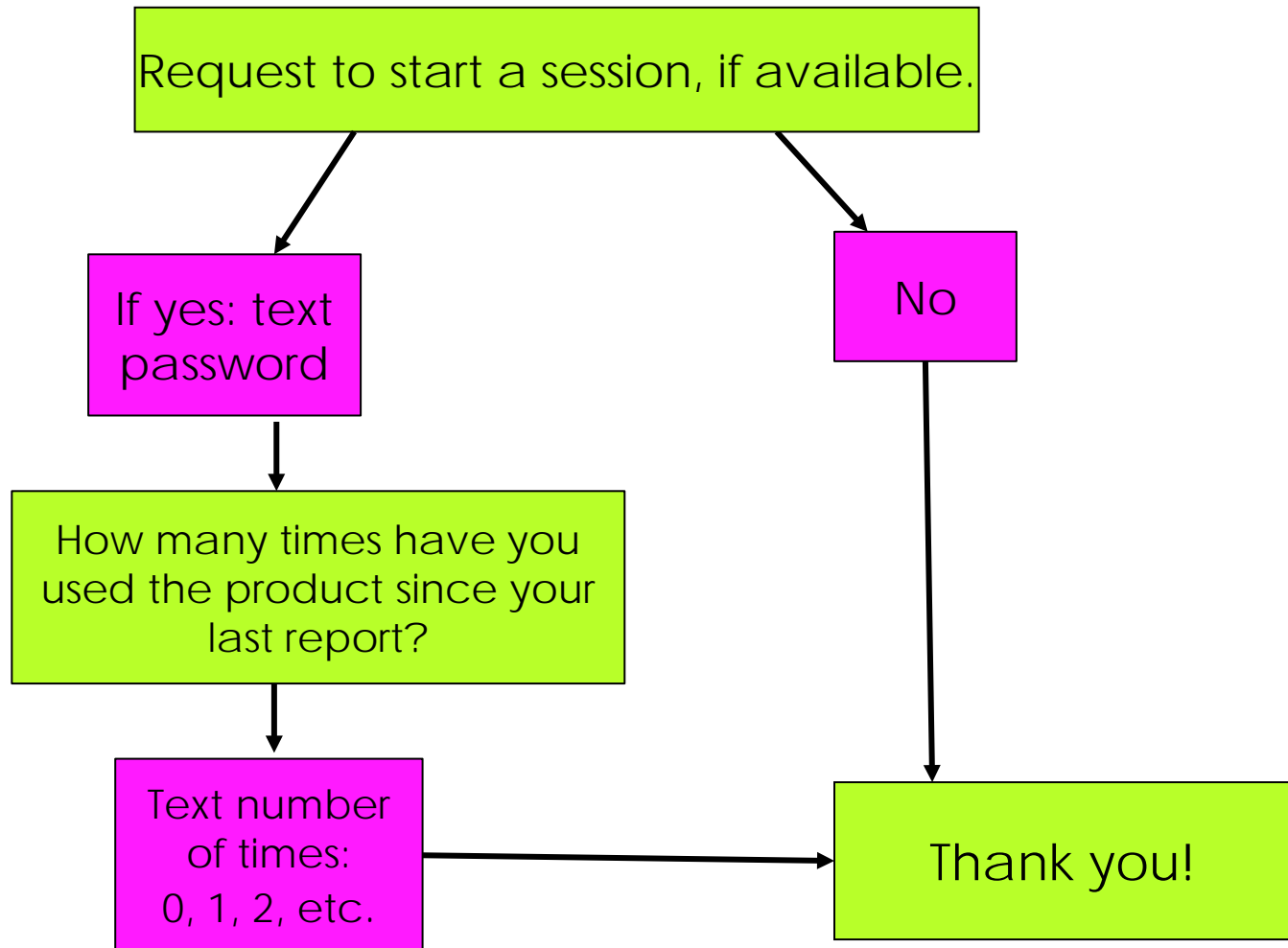
- To monitor **adherence**
- Daily reporting reduces recall bias
- Text messages may help remind participants to take product
- Method suggested by past participants as preferred over phone diary



SMS System

- Site staff provide instructions on how to join and use the SMS system at Enrollment and each Initiate Period Visit
- Participants select reminder time
 - a time of their choice/convenient
 - matched with expected time of product use
- Complete first SMS report during enrollment
- Receive daily reminder to report starting following day

SMS Question Tree





SMS System

- **SMS Training Script** for staff
&
- **SMS Diary Instructions** for participants

available in Thai on MTN Website at:

<http://www.mtnstopshiv.org/node/4524>

- **SMS Passwords** matched to PTIDs will be emailed prior to activation
- **Troubleshoot:** mtn017sms@mtnstopshiv.org



Questions?

Thank you! ขอบคุณค่ะ