

The powers and perils of DBS testing for PrEP

Peter L. Anderson, PharmD
Colorado Antiviral Pharmacology Laboratory
University of Colorado, USA



Skaggs School of Pharmacy
and Pharmaceutical Sciences

UNIVERSITY OF COLORADO
ANSCHUTZ MEDICAL CAMPUS

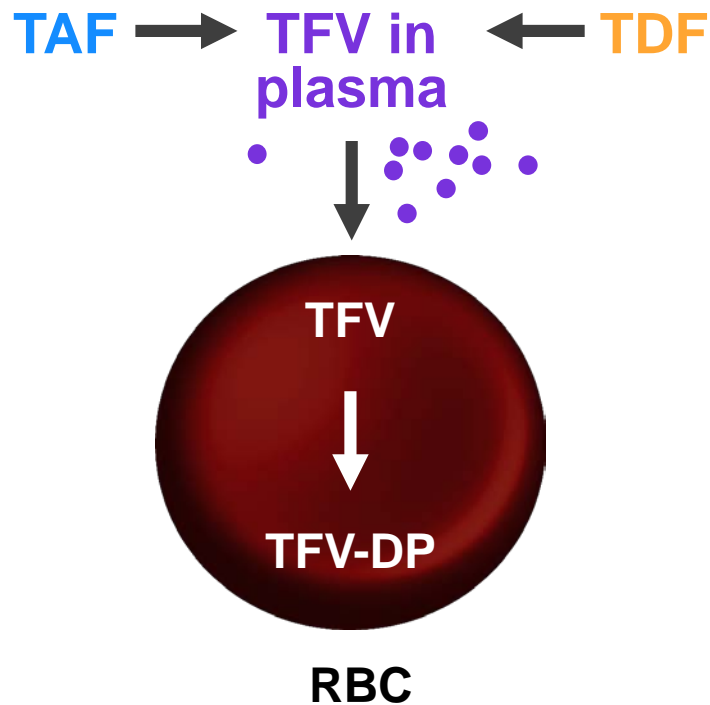
What is DBS?

- Intracellular (RBC) tenofovir-diphosphate (TFV-DP) measured using dried blood spots (DBS)
 - emtricitabine-triphosphate (FTC-TP) and lamivudine-triphosphate (3TC-TP) in the same DBS
- Measurements are used to assess adherence to TDF or TAF-based therapies

Selected studies using DBS for adherence

- MTN 034, 042
- HPTN 082, 083, 084
- HVTN (AMP), 703, 704
- IMPAACT 2009
- iPrEx OLE, ATN110/113, DISCOVER

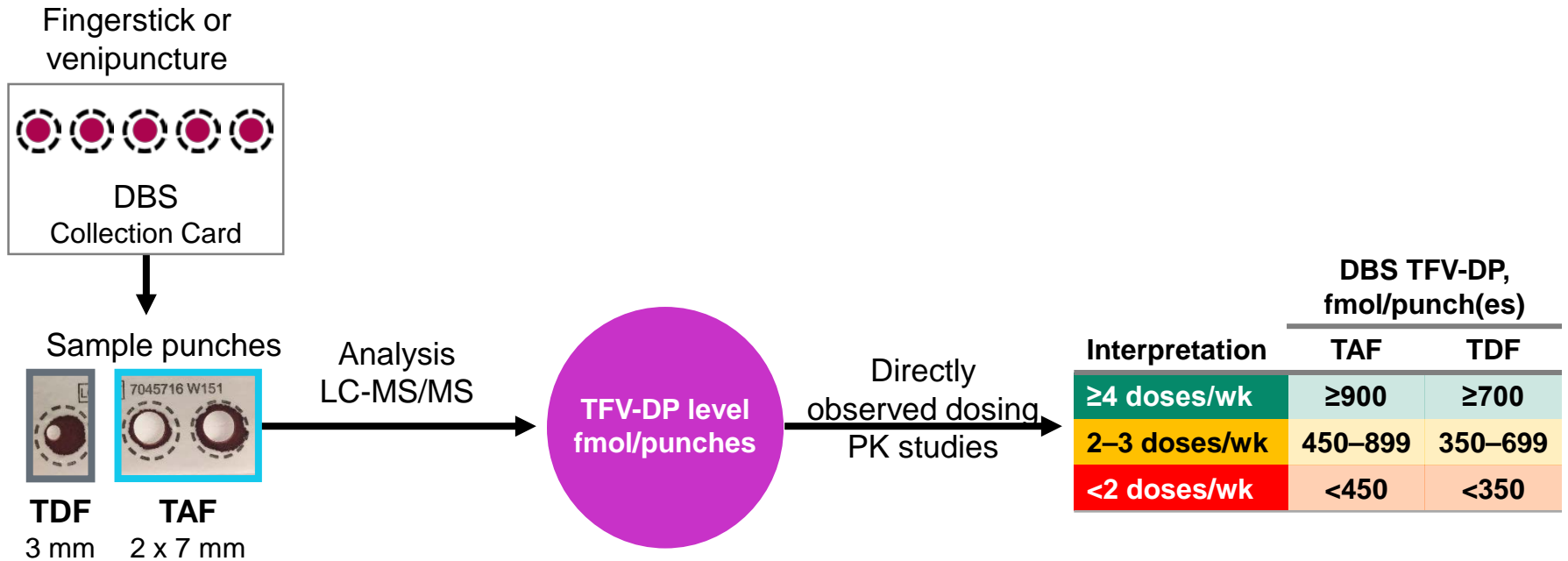
TFV-DP in DBS is a unique Adherence Biomarker



Key: TFV-DP Half Life in RBC ~17–20 days

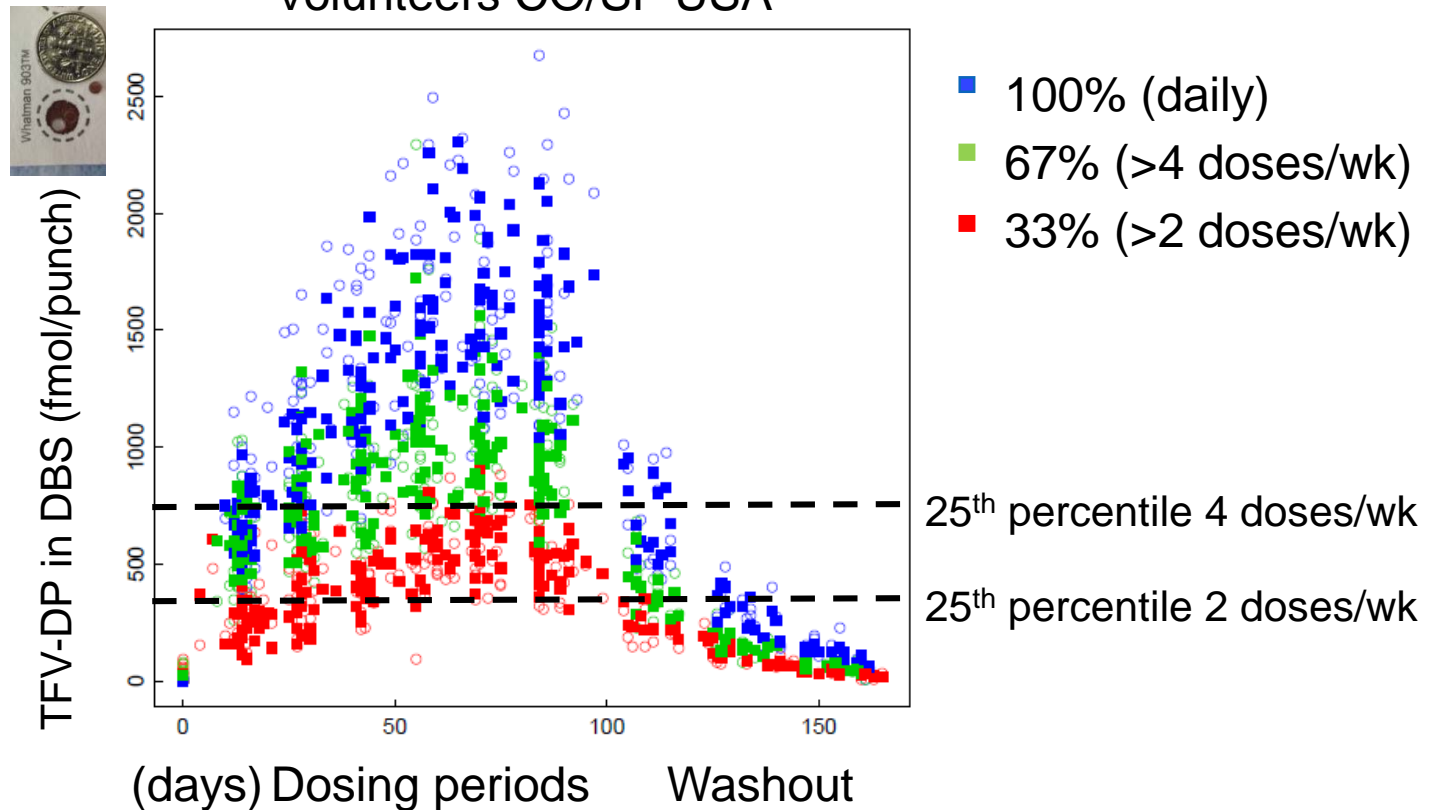
- DBS provides an objective measure of average adherence during the prior ~6-8 weeks; analogous to Hgb-A1C for glucose

Process: TFV-DP in DBS for Adherence



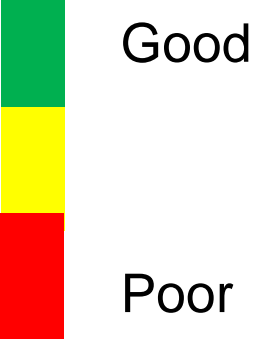
DBS thresholds, F-TDF

12 week DOT study 48 Healthy Volunteers CO/SF USA



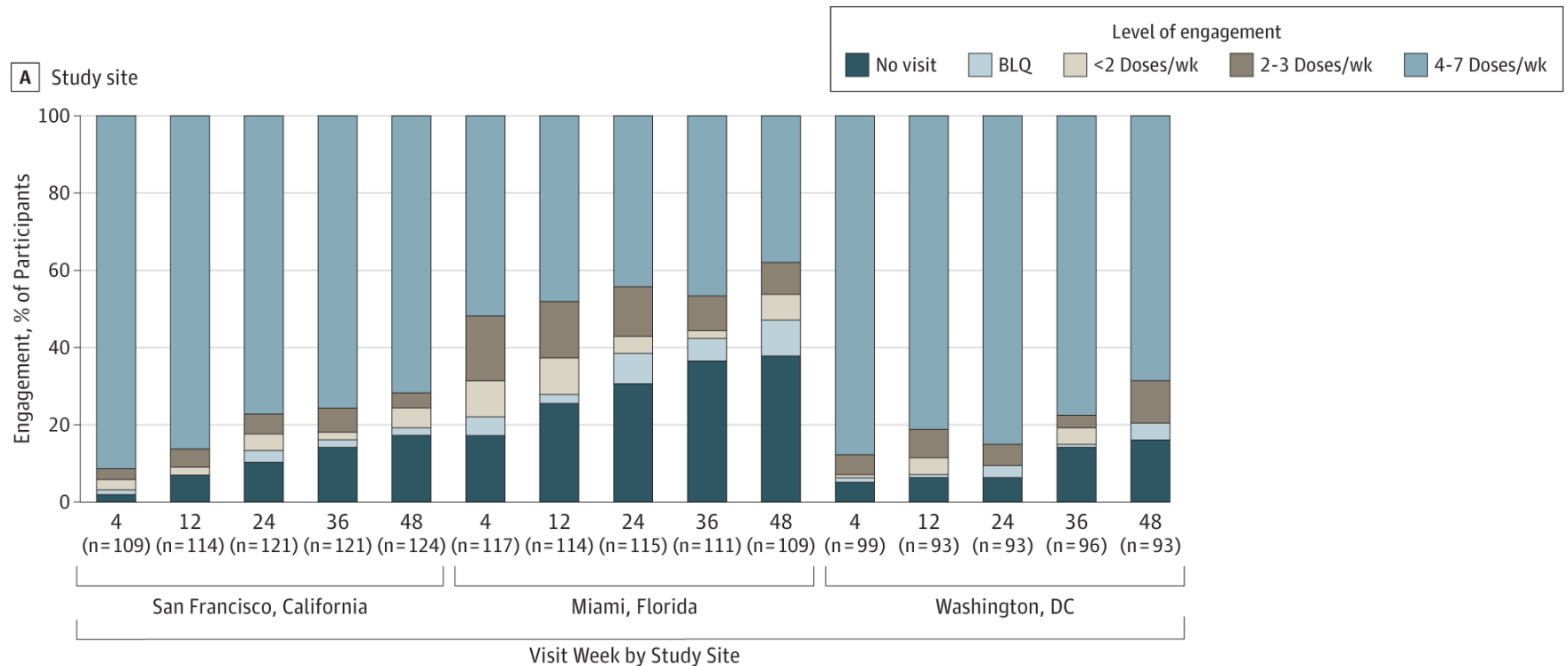
Power: Gradients of adherence with DBS

Steady-state TFV-DP (fmol/punch)	Adherence Interpretation
≥700	≥4 doses/wk
350 to 699	2-3 doses/wk
< 350	< 2 doses/wk



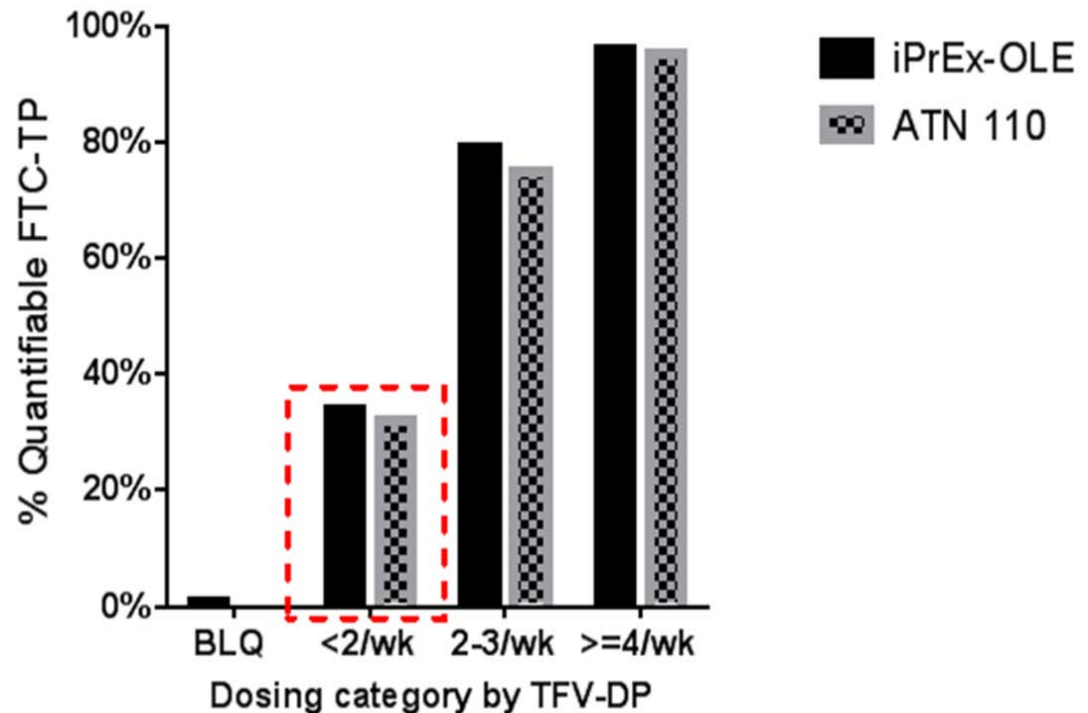
Pre-steady-state TFV-DP (<8 weeks) can be divided by $1 - e^{-0.04 * \text{Rx day}}$

Power: DBS for interpreting PrEP engagement



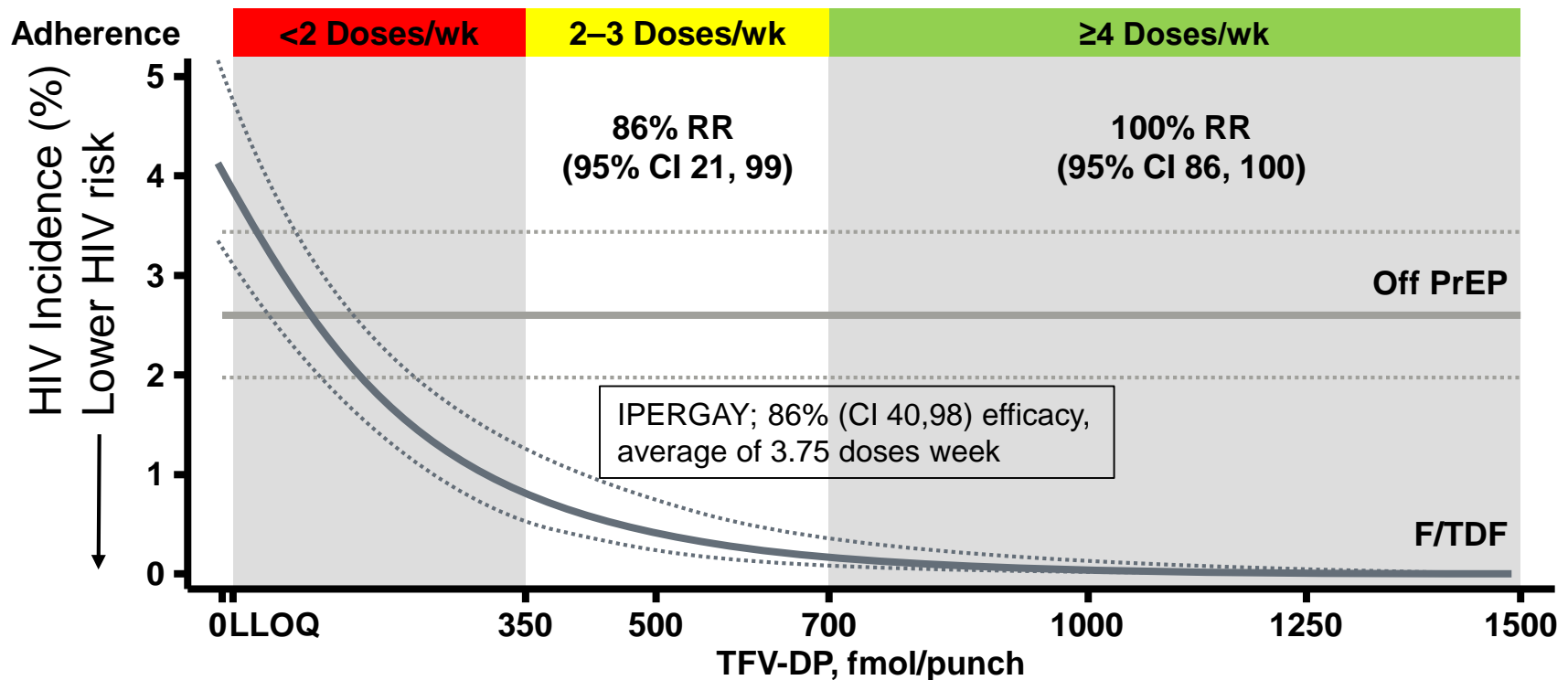
Power: deciphering white coat dosing

- FTC-TP short half-life like plasma TFV
- ~30% with TFV-DP <2 tab/wk had FTC-TP suggesting white coat dosing.



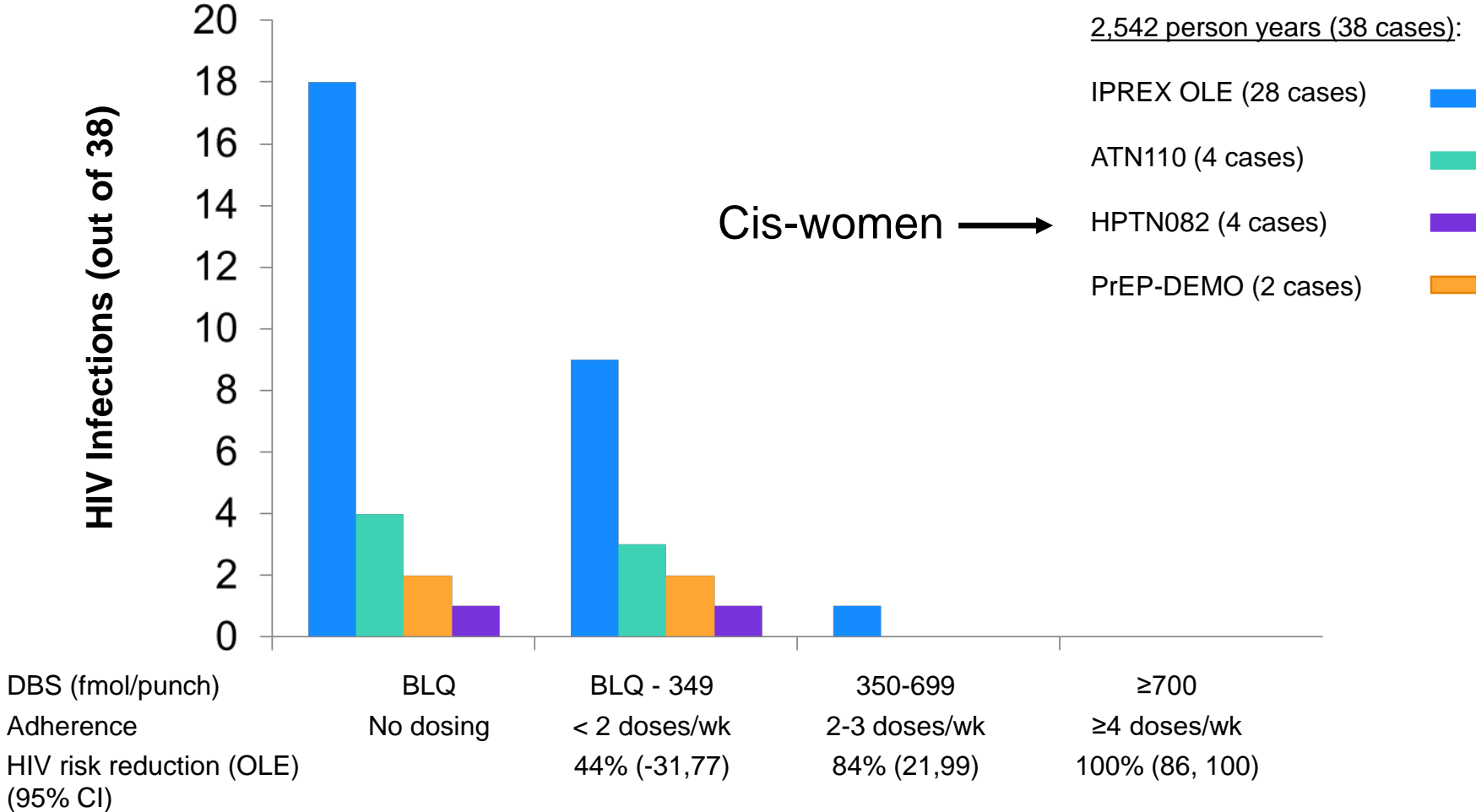
N=445

Power: DBS & HIV Risk Reduction in iPrEx OLE



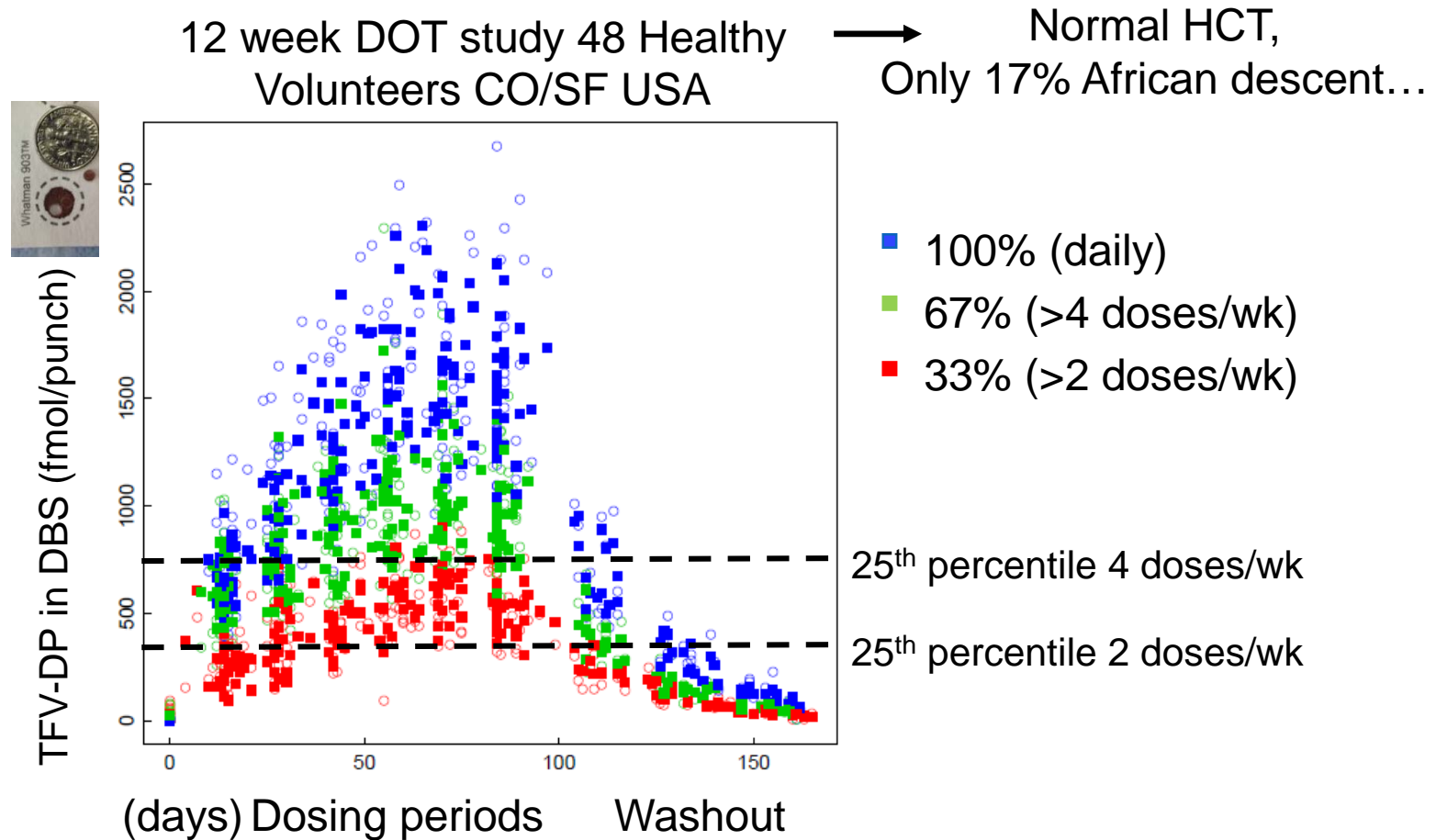
In event-driven dosing (IPERGAY) 86% efficacy in MSM with 3.75 doses/wk

Power: consistent adherence-response

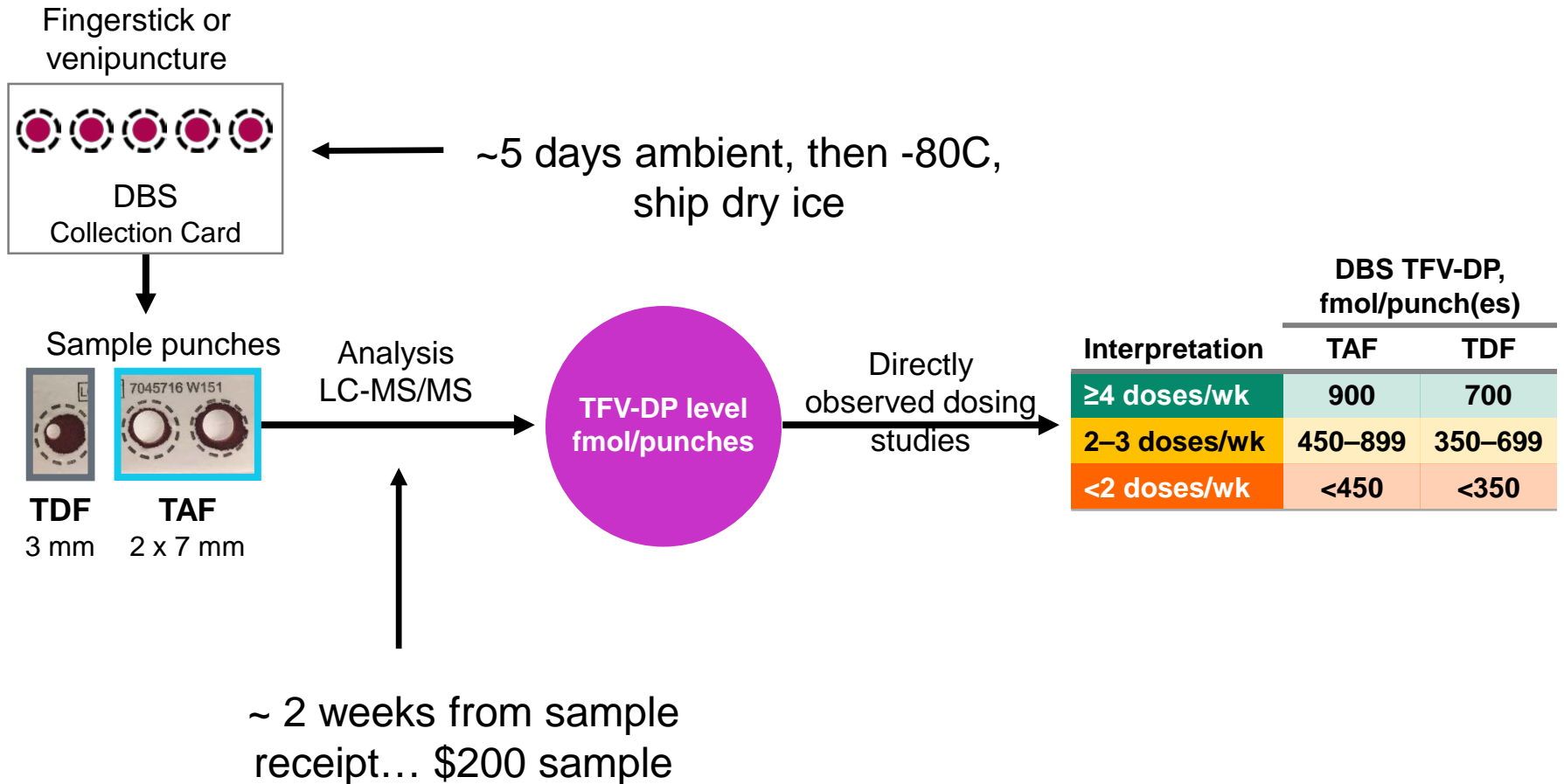


Grant. Lancet Infect Dis. 2014 Sep;14(9):820-9. AY Liu JAMA Intern Med. 2016 Jan 1;176(1):75-84. Hosek. JAIDS 2016 Sep 13; Molina. NEJM 2015 Dec 3;373(23):2237-46. Anderson, STM 2012 (PMID 22972843); Celum C et al. IAS 2019; 21-24 July 2019, Mexico City, Mexico.

Peril: PK from USA healthy volunteers



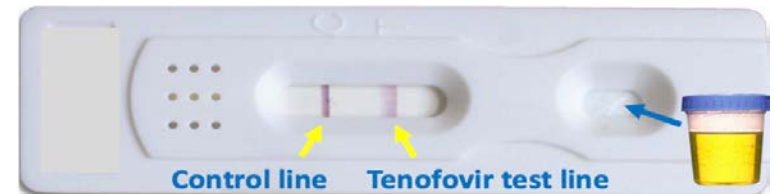
Peril: Storage, Turnaround Time and Cost



Future: Point of care

- Here for TFV in urine
 - UCSF (Gandhi/Alere-Abbott)
 - Ursure (<https://www.ursureinc.com/>)

- TFV-DP in RBC (blood)
 - CAVP/Purdue



Summary

Powers

- Gradients of adherence
- Hgb A1C-like interpretation
- Immune to white coat
- Strongly linked to outcomes
- Collection cheap/easy

Perils

- PK variability
- No dosing patterns
- -80C storage/dry ice ship
- Not POC and \$\$ (LC-MS)

Thank you!!

- Participants, colleagues, funders, the CAVP – special thanks to Lane Bushman, J Kiser, J Castillo-Mancilla

- JJ Kiser
- LR Bushman
- J Castillo-Mancilla
- JH Zheng
- L Ellison
- K Brooks
- C Mchugh
- And past and present members of the CAVP



- DV Glidden
- RM Grant
- A Liu